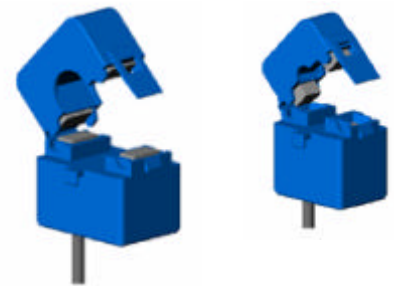


# SCL Miniature Split-Core Current Transformers

The **ND SCL** series of retro-fit (split-core) current sensors are designed for fast and easy installation without the need to disconnect any loads. These high precision units are equally suitable for Current or Power measurement - ideal for Energy Management or any form of automation and control systems.

An internal protection device across the secondary winding of the CT limits the output to a safe low voltage - no more worries about open-circuiting CT secondary circuits.



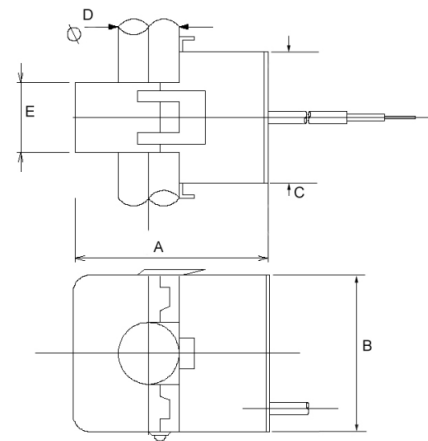
**SCL16**  
100 Amp

**SCL8**  
50 Amp

- Miniature Size
- Low Cost
- Safe, easy & simple to install

## Brief Specification

Electrical	
Nominal Input Current $I_n$	
SCL8 - 50	50 Amp
SCL16 - 100	100 Amp
Maximum Input Current $I_{max}$	
SCL8 - 50	100 Amp (1kA 1 minute)
SCL16 - 100	300 Amp (4kA 1 minute)
Output at $I_n$	
SCL8 - 50	16.67 mA
SCL16 - 100	33.33 mA
Frequency Range	50-60 Hz
Accuracy ( $0.1I_n - 1.3I_n$ )	$\pm 1\%$
Phase Error	$1\frac{1}{2}^\circ \pm 1^\circ$
Temperature Coefficient	60 ppm / °C
Mechanical	
Enclosure	Plastic to UL94V-0
Insulation Voltage	300 V <sub>rms</sub> CAT III
Environment	Indoor use only, altitude < 2000m
Operating Temperature	-25°C to +70 °C
Storage Temperature	-30°C to +90 °C
Humidity	Max 80% RH at 30°C Non-condensing
Output Connection	1m captive cable



Nominal Dimensions (mm)

Model	A	B	C	D	E
SCL8 - 50	43	37	32	8	13
SCL16 - 100	51	45	37	16	18

## Also Available

The **SCL16** is available with an integral transducer, providing a 0-5V<sub>dc</sub> output proportional to the input current.

Available ranges:

0 - 5 Amp	0 - 10 Amp
0 - 20 Amp	0 - 40 Amp
0 - 50 Amp	0 - 100 Amp.